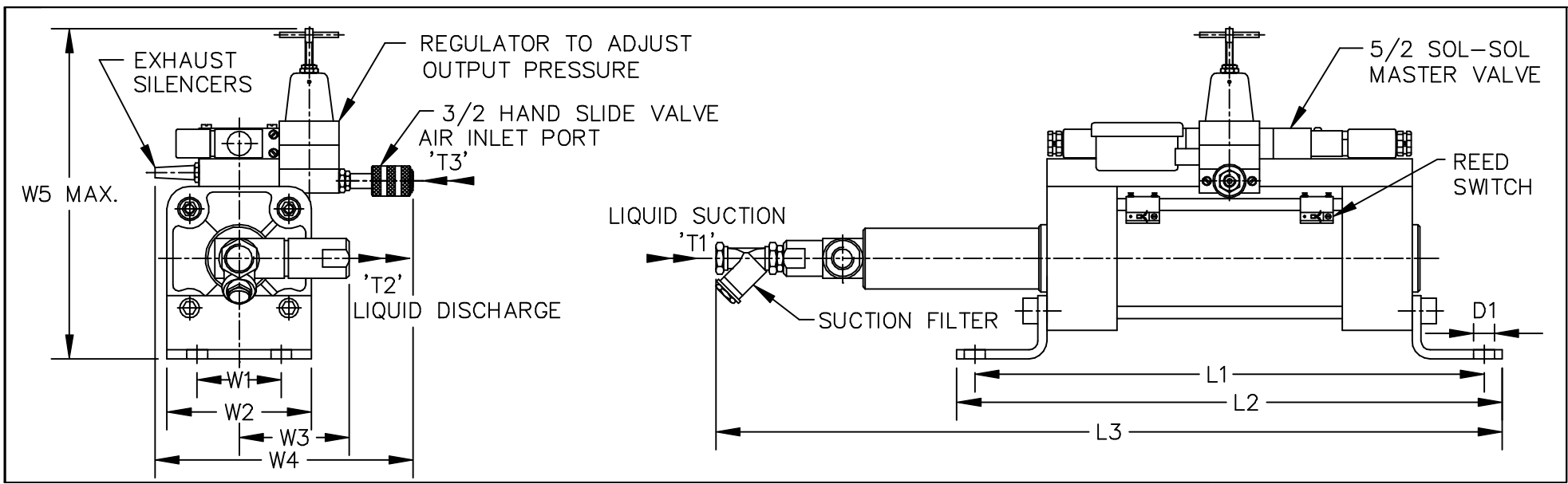
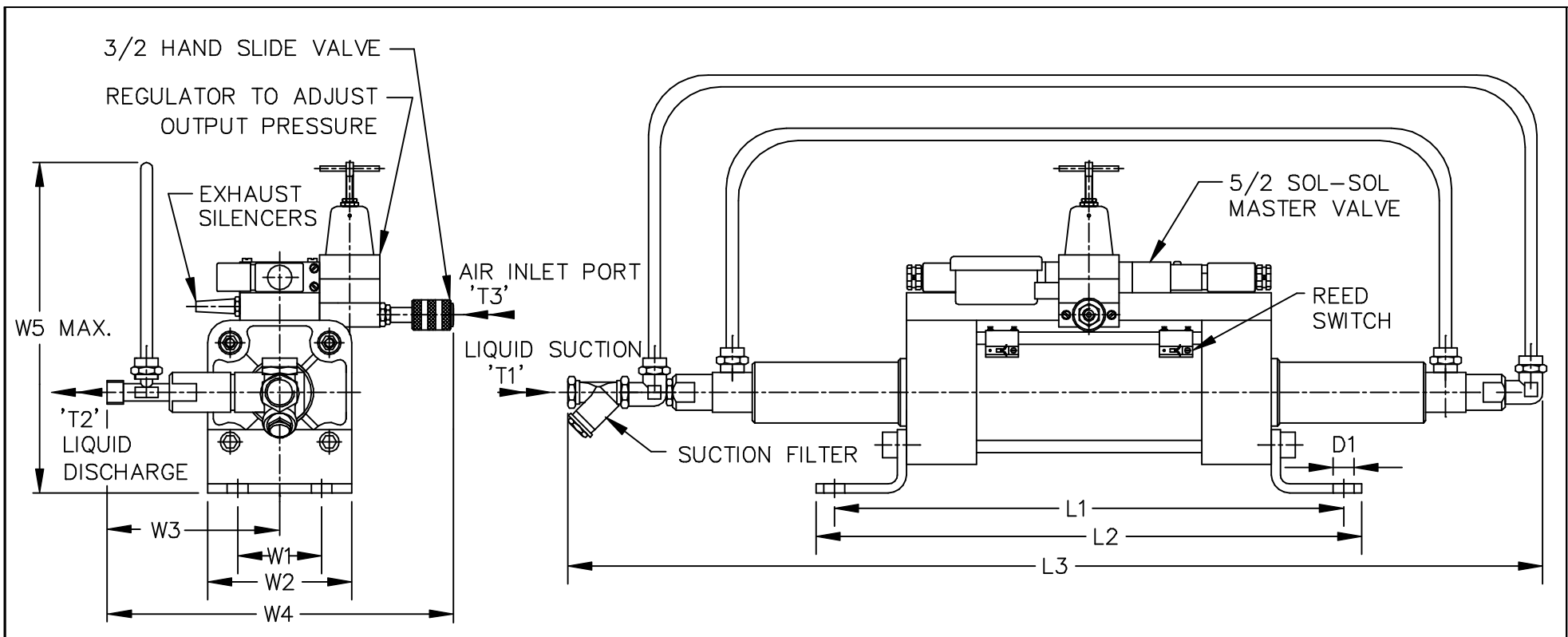


# GRAVITY SERIES 'PHE' HYDRO PNEUMATIC RECIPROCATING PUMP DIMENSIONS (ELECTRICALLY OPERATED)



Model No.	Ratio	Output Pressure at 5Kg/cm <sup>2</sup>	L1	L2	L3	W1	W2	W3	W4	W5	D1	T1	T2	T3	Free Discharge Litres/Min.	Free Air Consumption Litres/Min.	Seal Kit No.
PHE-80-10-1	64	320	303	343	446	63	98	76	215	245	12	G1/2	G1/2	G1/4	0.6	479	SKP-033
PHE-80-14-1	32	160	303	343	540	63	98	67	215	245	12	G1/2	G1/2	G1/4	1.2	475	SKP-034
PHE-80-16-1	25	125	303	343	540	63	98	67	215	245	12	G1/2	G1/2	G1/4	1.6	473	SKP-035
PHE-80-20-1	16	80	303	343	540	63	98	67	215	245	12	G1/2	G1/2	G1/4	2.5	467	SKP-036
PHE-80-28-1	8	40	303	343	540	63	98	67	215	245	12	G1/2	G1/2	G1/4	4.9	453	SKP-037
PHE-80-32-1	6.25	31	318	358	545	63	98	90	215	245	12	G1/2	G1/2	G1/4	5.6	388	SKP-038
PHE-100-10-1	100	500	313	359	479	75	118	76	215	260	14	G1/2	G1/2	G1/4	0.5	656	SKP-039
PHE-100-14-1	51	255	313	359	539	75	118	67	215	260	14	G1/2	G1/2	G1/4	1.1	653	SKP-040
PHE-100-16-1	39	195	313	359	539	75	118	67	215	260	14	G1/2	G1/2	G1/4	1.4	651	SKP-041
PHE-100-20-1	25	125	313	359	539	75	118	67	215	260	14	G1/2	G1/2	G1/4	2.2	646	SKP-042
PHE-100-28-1	12.75	64	313	359	539	75	118	67	215	260	14	G1/2	G1/2	G1/4	4.3	634	SKP-043
PHE-100-32-1	9.75	49	313	359	539	75	118	90	215	260	14	G1/2	G1/2	G1/4	4.8	536	SKP-044
PHE-100-56-1	3	15	350	394	473	75	118	90	215	260	14	G3/4	G1/2	G1/4	12.3	397	SKP-045
PHE-160-16-1	100	500	390	440	530	115	185	90	163	382	18	G1/2	G1/2	G1/2	1.2	1440	SKP-046
PHE-160-20-1	64	320	390	440	530	115	185	90	163	382	18	G1/2	G1/2	G1/2	1.9	1436	SKP-047
PHE-160-28-1	32	160	390	440	530	115	185	90	177	382	18	G1/2	G1/2	G1/2	3.1	1187	SKP-048
PHE-160-32-1	25	125	390	440	530	115	185	90	280	365	18	G1/2	G1/2	G1/2	4.0	1182	SKP-049
PHE-160-40-1	16	80	390	440	530	115	185	82	280	365	18	G3/4	G1/2	G1/2	5.0	934	SKP-050
PHE-160-56-1	8	40	390	440	530	115	185	82	280	365	18	G3/4	G1/2	G1/2	9.8	906	SKP-051
PHE-160-10-2	260	1300	558	639	690	115	185	76	280	365	18	G1/2	G1/2	G1/2	0.8	1201	SKP-052
PHE-160-20-2	128	640	558	639	690	115	185	76	280	365	18	G1/2	G1/2	G1/2	1.6	1196	SKP-053

# GRAVITY SERIES 'PHED' DUAL HEAD HYDRO PNEUMATIC RECIPROCATING PUMP DIMENSIONS (ELECTRICALLY OPERATED)



Model No.	Ratio	Output Pressure at 5Kg/cm <sup>2</sup>	L1	L2	L3	W1	W2	W3	W4	W5	D1	T1	T2	T3	Free Discharge Litres/Min.	Free Air Consumption Litres/Min.	Seal Kit No.
PHED-80-14-1	31	155	303	343	727	63	98	99	215	185	12	G1/2	G1/2	G1/4	2.52	475	SKP-054
PHED-80-16-1	24	120	303	343	727	63	98	99	215	185	12	G1/2	G1/2	G1/4	2.88	473	SKP-055
PHED-80-20-1	15	75	303	343	727	63	98	99	215	185	12	G1/2	G1/2	G1/4	4.2	467	SKP-056
PHED-80-28-1	7	35	303	343	727	63	98	99	215	185	12	G1/2	G1/2	G1/4	9.0	453	SKP-057
PHED-80-32-1	5.25	26.25	318	358	727	63	98	122	215	185	12	G1/2	G1/2	G1/4	10.8	388	SKP-058
PHED-100-14-1	50	250	313	359	764	75	118	99	215	185	14	G1/2	G1/2	G1/4	2.2	653	SKP-059
PHED-100-16-1	38	190	313	359	764	75	118	99	215	200	14	G1/2	G1/2	G1/4	2.1	651	SKP-060
PHED-100-20-1	24	120	313	359	764	75	118	99	215	200	14	G1/2	G1/2	G1/4	2.9	646	SKP-061
PHED-100-28-1	11.75	58	313	359	764	75	118	99	215	200	14	G1/2	G1/2	G1/4	8.6	634	SKP-062
PHED-100-32-1	8.75	43	313	359	764	75	118	122	215	200	14	G1/2	G1/2	G1/4	7.5	536	SKP-063
PHED-100-56-1	2	10	350	394	764	75	118	122	215	200	14	G3/4	G1/2	G1/4	22.14	397	SKP-064
PHED-160-20-1	64	320	390	440	773	115	185	114	280	300	18	G1/2	G1/2	G1/2	3.8	1436	SKP-065
PHED-160-32-1	24	120	390	440	773	115	185	122	280	300	18	G1/2	G1/2	G1/2	5.7	1182	SKP-066
PHED-160-40-1	15	75	390	440	773	115	185	114	280	300	18	G3/4	G1/2	G1/2	9.0	934	SKP-067
PHED-160-56-1	7	35	390	440	773	115	185	114	280	300	18	G3/4	G1/2	G1/2	17.64	906	SKP-068